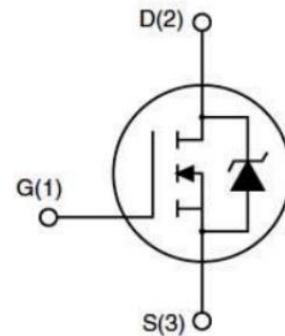


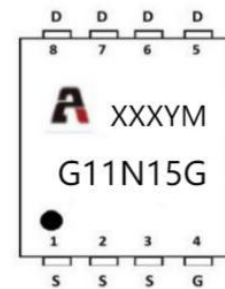
Features

- 150V,75A
 $R_{DS(on)} < 10.8m\Omega @ V_{GS}=10V$ TYP:9.5m Ω
 $R_{DS(on)} < 12.1m\Omega @ V_{GS}=8V$ TYP:10.5m Ω
- Split Gate Trench Technology
- Low On-Resistance
- Low Gate Charge



Applications

- Synchronous Rectification for AC/DC Quick Charger
- Battery management
- UPS



Marking and pin Assignment

Package Marking and Ordering Information

Device Marking	Device	Device Package	Reel Size	Tape width	Quantity (PCS)
G11N15G	APG11N15G	PDFN5X6	-	-	5000

ABSOLUTE MAXIMUM RATINGS ($T_J=25^\circ\text{C}$ unless otherwise noted)

Parameter	Symbol	Value	Unit
Drain-Source Voltage	V_{DS}	150	V
Gate-Source Voltage	V_{GS}	± 20	V
Continuous Drain Current ($T_c=25^\circ\text{C}$) ⁽¹⁾	I_D	75	A
Continuous Drain Current ($T_c=100^\circ\text{C}$)	I_D	52	A
Pulsed Drain Current ^(2,3)	I_{DM}	300	A
Drain Power Dissipation ⁽¹⁾	P_D	125	W
Single Pulsed Avalanche Energy	E_{AS}	225	mJ
Thermal Resistance from Junction to Case ⁽¹⁾	$R_{\theta JC}$	1	$^\circ\text{C}/\text{W}$
Thermal Resistance from Junction to Ambient	$R_{\theta JA}$	60.5	$^\circ\text{C}/\text{W}$
Junction Temperature	T_J	-55~ +150	$^\circ\text{C}$
Storage Temperature	T_{STG}	-55~ +150	$^\circ\text{C}$

MOSFET ELECTRICAL CHARACTERISTICS(T_J=25°C unless otherwise noted)

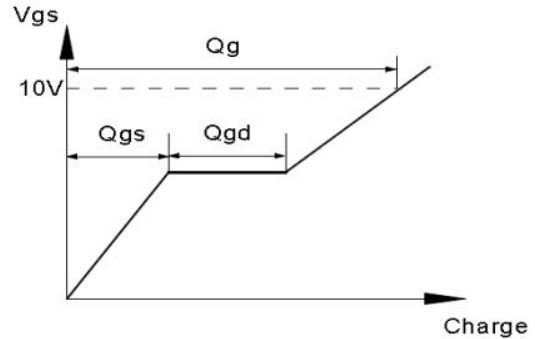
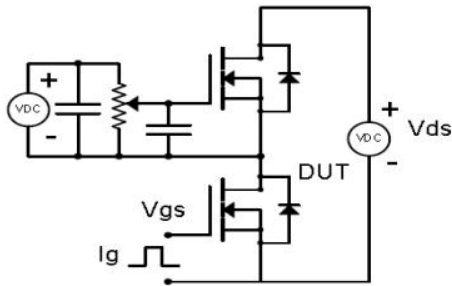
Parameter	Symbol	Test Condition	Min	Type	Max	Unit
Static Characteristics						
Drain-source breakdown voltage	V _{(BR)DSS}	V _{GS} = 0V, I _D =250μA	150	-	-	V
Zero gate voltage drain current	I _{DSS}	V _{DS} =120V, V _{GS} = 0V	-	0.1	1	μA
Gate-body leakage current	I _{GSS}	V _{GS} =±20V, V _{DS} = 0V	-	-	±100	nA
Gate threshold voltage	V _{GS(th)}	V _{DS} =V _{GS} , I _D =250μA	2	3	4	V
Drain-source on-resistance ⁽⁴⁾	R _{DS(on)}	V _{GS} =10V, I _D =40A	-	9.5	10.8	mΩ
		V _{GS} =8V, I _D =20A	-	10.5	12.1	mΩ
Gate resistance	R _G	V _{DS} =0V, V _{GS} =0V, f=1MHz	-	1.4	-	Ω
Dynamic characteristics⁽⁵⁾						
Input Capacitance	C _{iSS}	V _{DS} =75V, V _{GS} =0V, f=1MHz	-	2236	-	pF
Output Capacitance	C _{oSS}		-	374	-	
Reverse Transfer Capacitance	C _{rSS}		-	31	-	
Switching characteristics⁽⁵⁾						
Turn-on delay time	t _{d(on)}	V _{DD} =75V, I _D =44A, R _G =2.7Ω, V _{GS} =10V	-	14.1	-	nS
Turn-on rise time	t _r		-	40.5	-	
Turn-off delay time	t _{d(off)}		-	24.7	-	
Turn-off fall time	t _f		-	8.8	-	
Total Gate Charge	Q _g	V _{DS} =75V, I _D =40A, V _{GS} =10V	-	32.6	-	nC
Gate-Source Charge	Q _{gs}		-	13.7	-	
Gate-Drain Charge	Q _{gd}		-	6.7	-	
Source-Drain Diode characteristics						
Diode Forward voltage ⁽⁴⁾	V _{SD}	T _J =25°C, V _{GS} =0V, I _S =40A	0.7	1.0	1.3	V
Diode Forward current	I _S	T _C =25°C	-	-	75	A
Body Diode Reverse Recovery Time	t _{rr}	T _J =25°C, I _F =40A, di/dt=100A/us	-	45.9	91.8	nS
Body Diode Reverse Recovery Charge	Q _{rr}		-	47.9	95.8	nC

Notes:

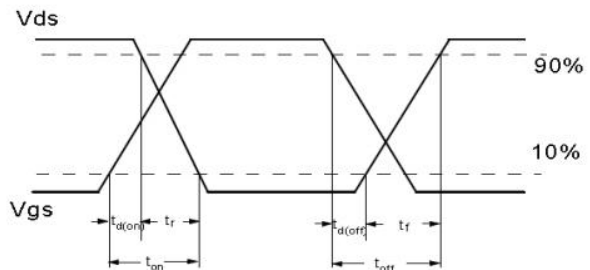
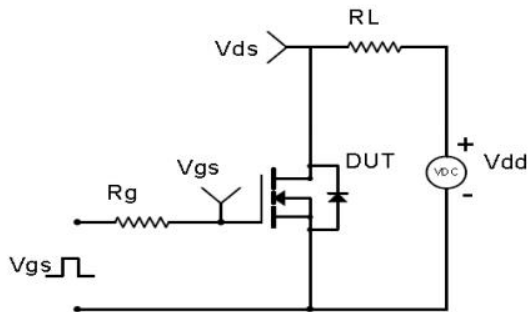
- 1) Surface Mounted on 1 in² pad area, t ≤ 10 sec
- 2) Pulse width ≤ 10μs, duty cycle ≤ 1 %
- 3) Limited by bonding wire
- 4) Pulse width ≤ 300 μs, duty cycle ≤ 2%
- 5) Guaranteed by design, not subject to production testing

Test Circuit & Waveform

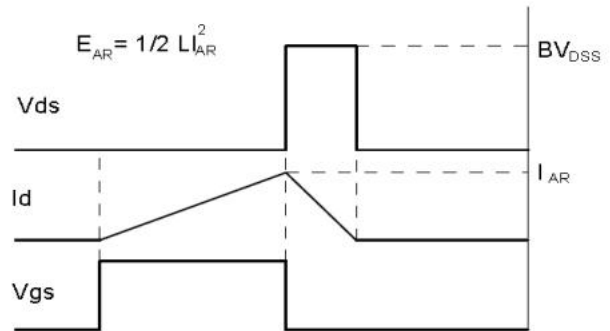
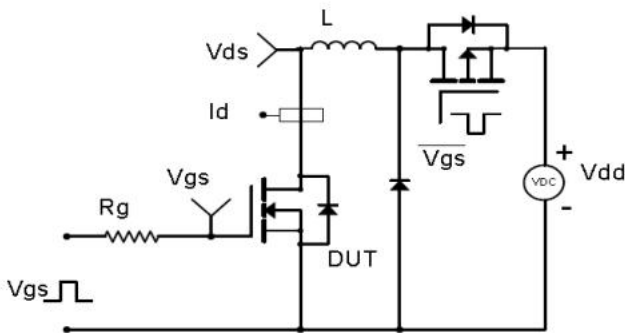
Gate Charge Test Circuit & Waveform



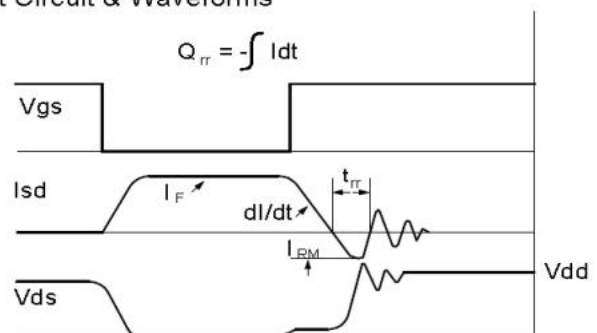
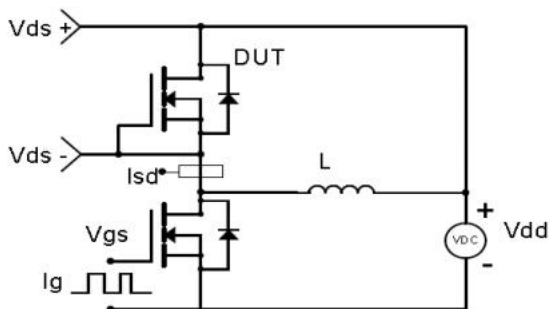
Resistive Switching Test Circuit & Waveforms



Unclamped Inductive Switching (UIS) Test Circuit & Waveforms



Diode Recovery Test Circuit & Waveforms



Typical Characteristics

Fig 1: Output Characteristics

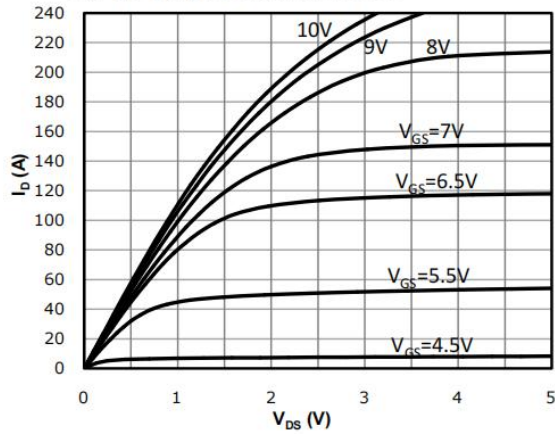


Fig 2: Transfer Characteristics

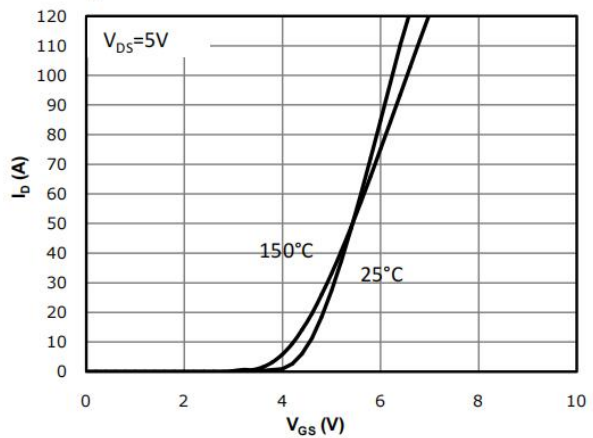


Fig 3: Rds(on) vs Drain Current and Gate Voltage

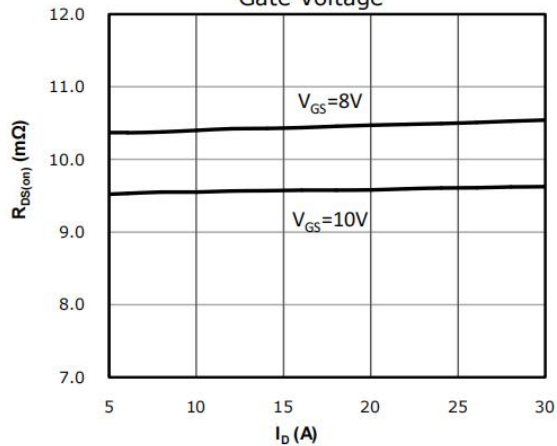


Fig 4: Rds(on) vs Gate Voltage

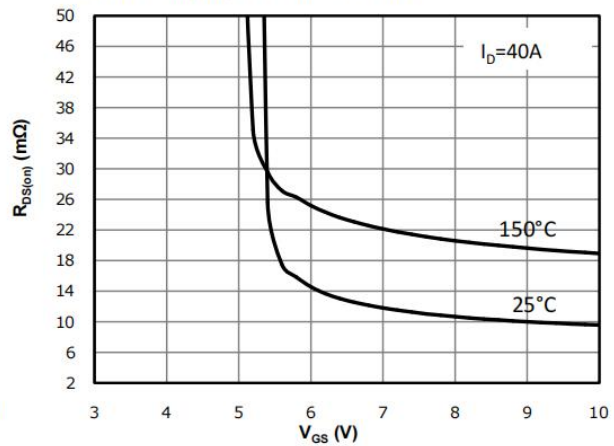


Fig 5: Rds(on) vs. Temperature

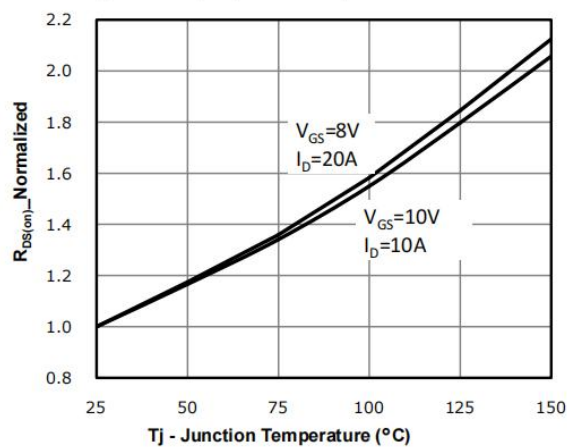
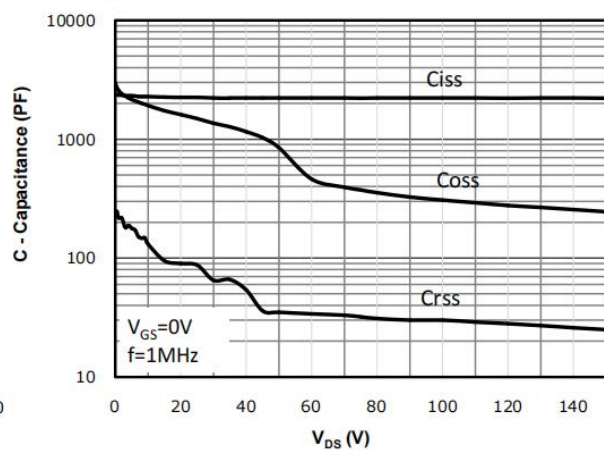


Fig 6: Capacitance Characteristics



Typical Characteristics

Fig 7: Gate Charge Characteristics

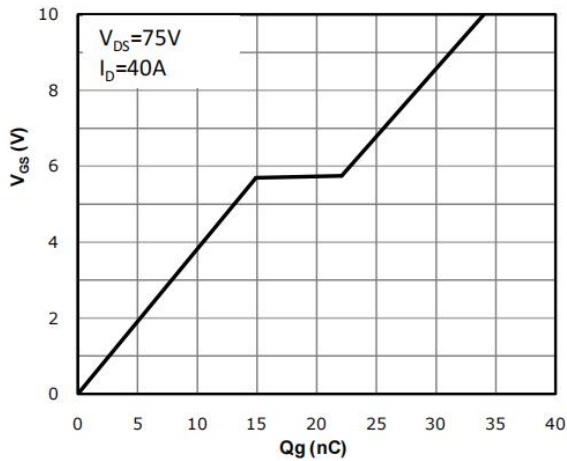


Fig 8: Body-diode Forward Characteristics

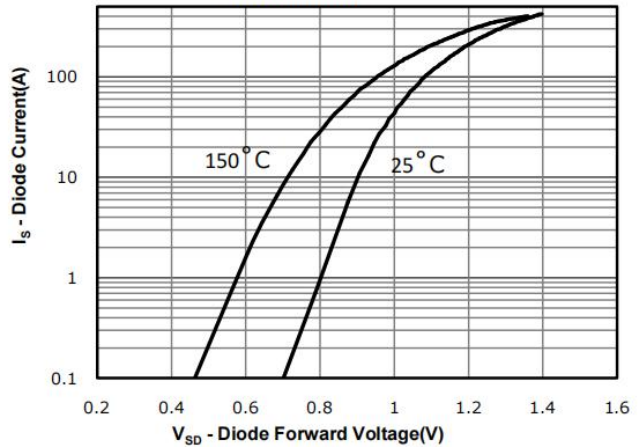


Fig 9: Power Dissipation

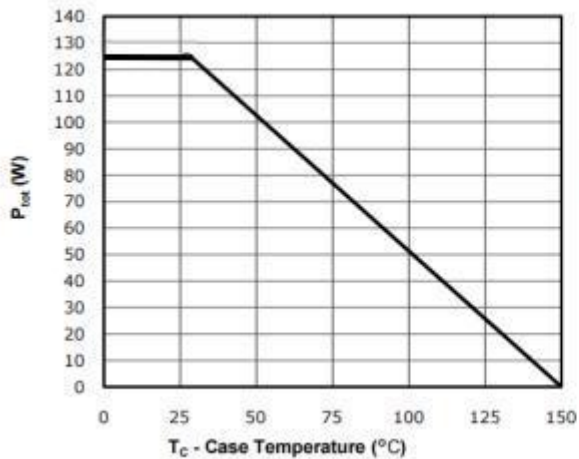


Fig 10: Drain Current Derating

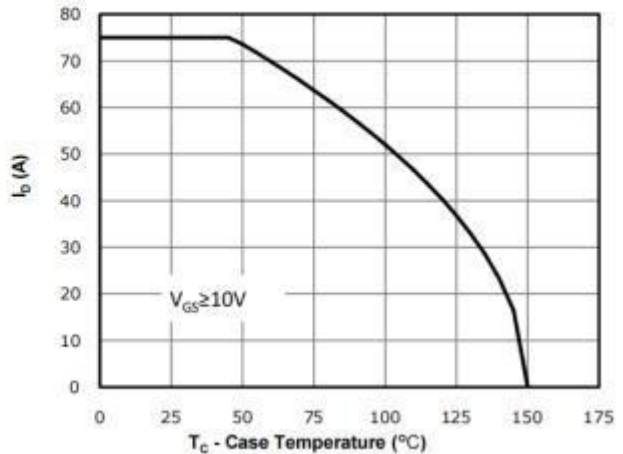
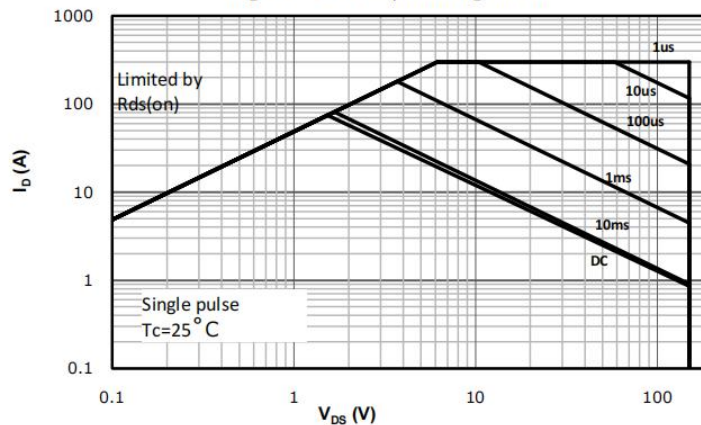
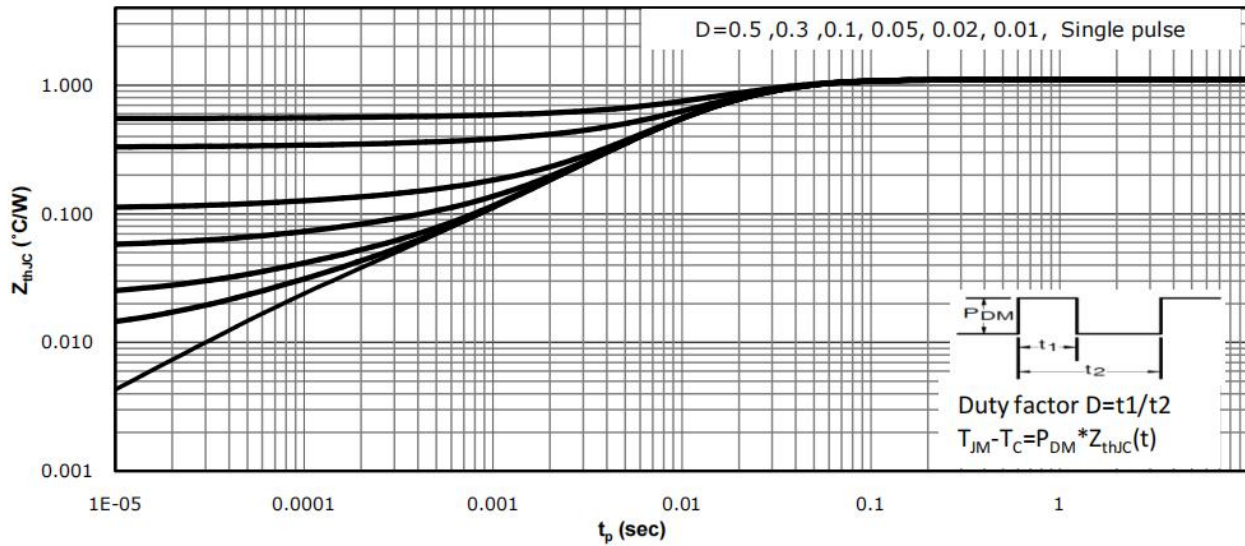


Fig 11: Safe Operating Area

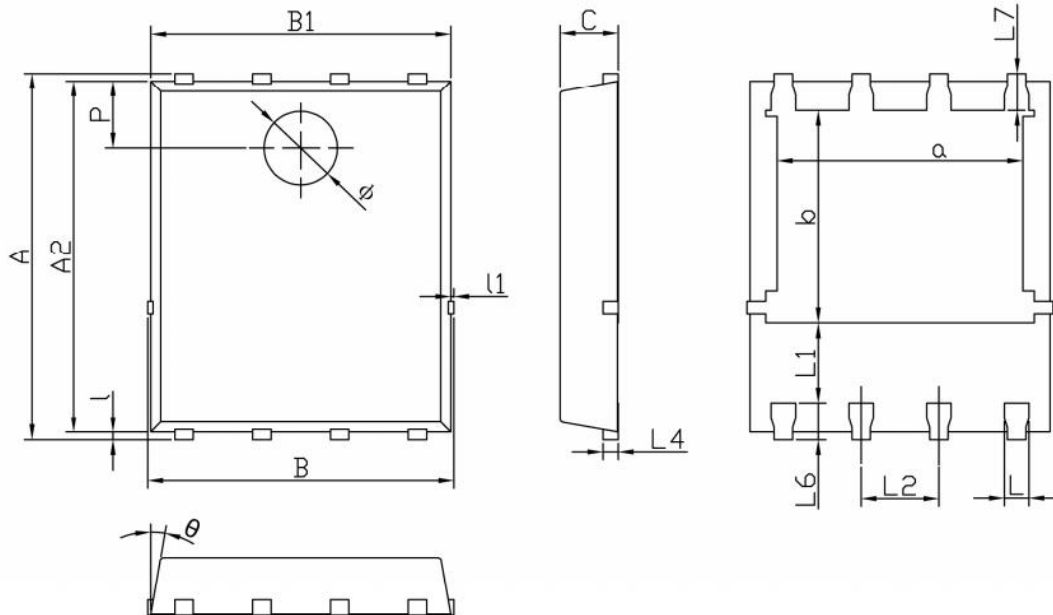


Typical Characteristics

Fig 12: Max. Transient Thermal Impedance



PDFN5X6 Package Information



Dimensions In Millimeterer			
Symbol	MIN	TYP	MAX
A	5.90	6.00	6.10
a	3.91	4.01	4.11
A2	5.70	5.75	5.80
B	4.90	5.00	5.10
b	3.37	3.47	3.57
B1	4.80	4.90	5.00
C	0.90	0.95	1.00
L	0.35	0.40	0.45
l	0.06	0.13	0.20
L1	1.10	-	-
l1	-	-	0.10
L2	1.17	1.27	1.37
L4	0.21	0.26	0.34
L6	0.51	0.61	0.71
L7	0.51	0.61	0.71
P	1.00	1.10	1.20
θ	8°	10°	12°
ϕ	1.10	1.20	1.30

Revision History

Revision	Release	Remark
V1.0	2023/10/01	Initial Release

Disclaimer

The information given in this document describes the independent performance of the product, but similar performance is not guaranteed under other working conditions, and cannot be guaranteed when installed with other products or equipment. To achieve the required performance of the product in actual scenarios, the customer should conduct a complete application test to assess the functionality of the product.

Allpower assumes no responsibility for equipment failures result from using products at values that exceed the ratings, operating conditions, or other parameters listed in the product specifications.

The product described in this specification is not applicable for aerospace or other applications which requires high reliability. Customers using or selling these products for use in medical, life-saving, or life-sustaining applications do so at their own risk and agree to fully indemnify.

Due to product or technical improvements, the information described or contained herein may be changed without prior notice.